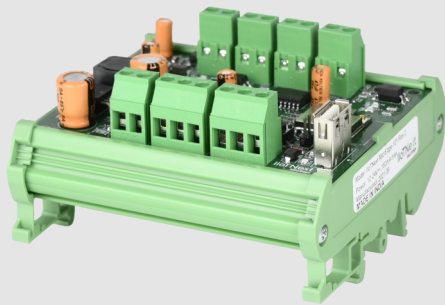


Cloud enabled WiFi IIoT Gateway family for Remote Asset Monitoring & Management



Model: IloTNext MicrEdge-101

Features

- ✓ Collect data through RS485 Modbus port and Physical I/Os
- ✓ Control Digital Output from IloTNext Platform over RPC
- ✓ Supports Secure MQTT for cloud communication
- ✓ Device Management from IloTNext Platform
- ✓ Auto Device Provisioning
- ✓ Zero-conf integration to IloTNext Platform

IloTNext MicrEdge-101 is a WiFi IIoT Gateway with on-board I/Os to collect Industrial Data from sensors/instruments and manage them remotely from IloTNext Platform

General

Input Power : 12-24 VDC
 Mounting : 35mm DIN Rail

Ports

Serial Ports : 1 x RS485 Port
 USB Port : USB Type A for Firmware download / Console
 Wireless : 2.4 GHz WiFi IEEE 802.11 b/g/n

Protocols

Device Connectivity : Modbus RTU on RS485 (Optional)
 Cloud Connectivity : IloTNext Platform (Secure MQTT)

Environment

Operating Temperature : -20 to +50 Deg.C
 Humidity : 5 - 95% without condensation

Configuration

Mobile app : For WiFi configuration
 Dashboards : Ready to use dashboard templates for visualization on IloTNext Platform

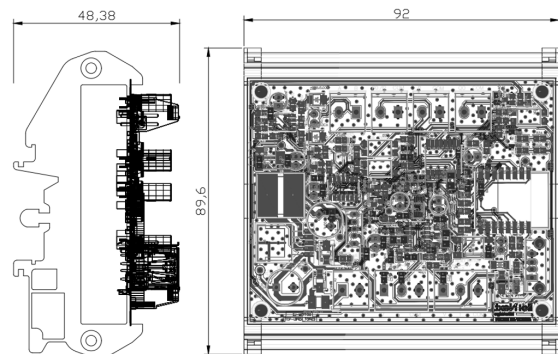
Inputs/Outputs

Digital Input/Pulse : 1 x 100Hz Pulse Input
 : 1 x Digital Input, 24 VDC
 Digital Output : 1 x Digital Output (PNP), 24VDC / 500mA
 Analog Inputs : 2 x Analog Inputs (4-20mA / 0-10V), 10 bit

Other Interfaces

Buttons : Hard Reset Button
 : LED1 (Red) - Power
 LED Indications : LED2 (Blue) - Connect
 : LED3 (Green) - Digital Output
 WiFi Antenna Interface : SMA Connector

Dimensions



Ordering Information (Part #)

INME101-002-00	: without Modbus RTU	INME101-002-02	: with Modbus RTU slave
INME101-002-01	: with Modbus RTU Master	INME101-002-03	: with Modbus TCP Server