



# Product Information



## IloTNext Platform

A scalable, robust and secure Industrial IoT Application enablement platform to monitor and manage distributed assets



## Features

### User Interface

- Interactive HTML5 based web UI
- Dashboards to represent your asset hierarchy
- Visualization using state-of-the-art Charts, Trends, Gauges, Timeseries tables, Cards, Labels etc.
- Drill down dashboards for deeper analysis
- Configure, Control and Manage your assets remotely
- Unlimited web clients
- Mobile ready UI based on inherently responsive design
- Access your application from Android or iOS device
- Available on Tablets or any hand-held device with a web browser
- Locate your assets on interactive Maps

### Reports

- Customizable reports for optimal business insights
- Generate reports for any time period with appropriate aggregation intervals
- Apply statistical functions like Min, Max, Average, Sum and Count
- Export reports in PDF or MS Excel format
- Automatically generate & send reports via email

### Alerts & Notifications

- Comprehensive Alerts & Notifications Management
- Propagate Alarms from device level to related assets
- Raise Alarms on device inactivity or disconnect events
- Create Alerts from statistical functions applied on historical data
- Create custom conditions to raise alarms
- Email, SMS or other collaboration apps like MS Teams

### Application Building

- Create dashboards by drag-and-drop of widgets
- Extensively customizable widgets to achieve your design goals
- JavaScript based customization for advanced users
- In-built widget library
- Control Widgets to manage assets and sites remotely
- Custom widgets enriches your widgets library
- Create custom widgets with HTML, CSS & JavaScript knowledge
- New custom widgets can be based on existing widgets.
- High performance timeseries database



(Contd. in next page)



### Data Sources

- MQTT, RESTful APIs, or OPC-UA as primary data sources
- LoRa, Azure IoT, AWS IoT, CoAP as alternate sources
- Publish telemetry in simple key-value pair JSON format
- Data Converters for custom data formats

### Asset Management

- Asset Hierarchy support to represent real-world scenario
- Aggregate data populated automatically from related devices
- Groups and categories for better management of assets
- Custom relations to represent complex relationships between assets

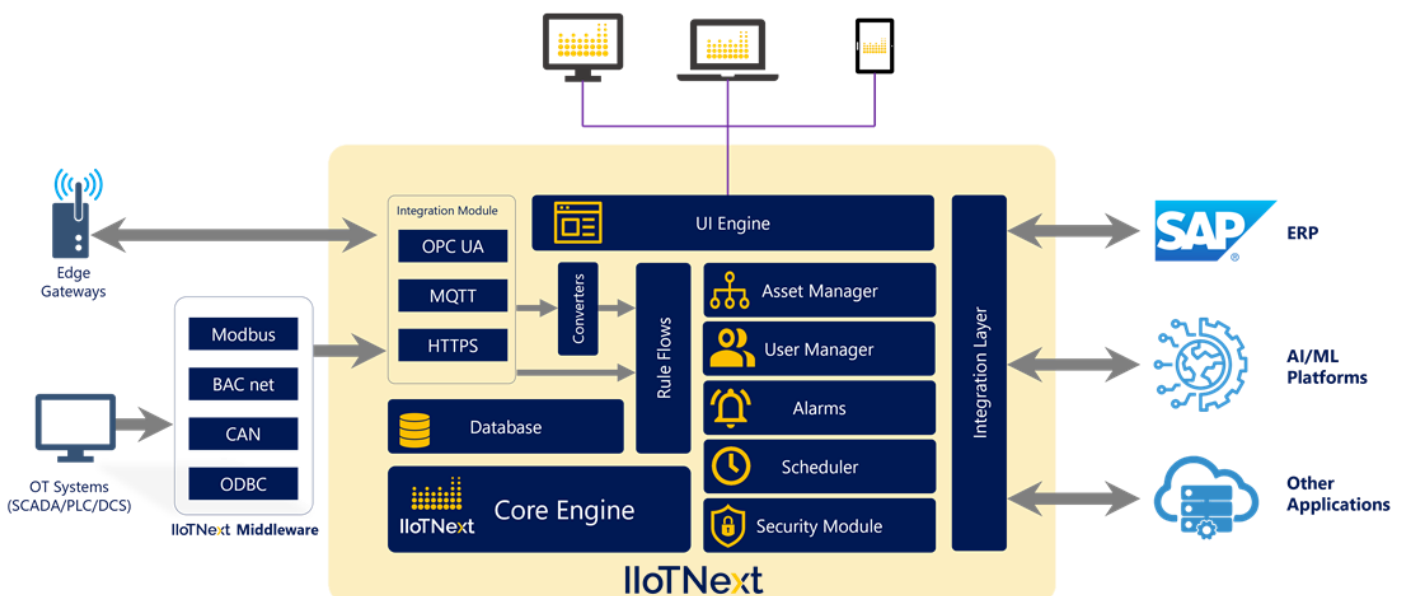
### Multi Tenancy

- Host & manage multiple customers from a single account
- Keep your customer's data and application completely isolated from each other

### Device Management

- Manage 1,000s of IloT gateways
- In-built Connectivity & Activity status monitoring
- Over The Air (OTA) firmware updates
- Remote Procedure Call (RPC) commands to control the remote device
- Bulk Provisioning of gateways

### Software Architecture



(Contd. in next page)



### White-labelling

- Rebrand the platform with your company logo and colour scheme
- Zero coding white-labelling
- URL white labelling

### Fault-tolerance

- All IloTNext servers are identical. Node failure is automatically detected and replaced without downtime

### Rule flow

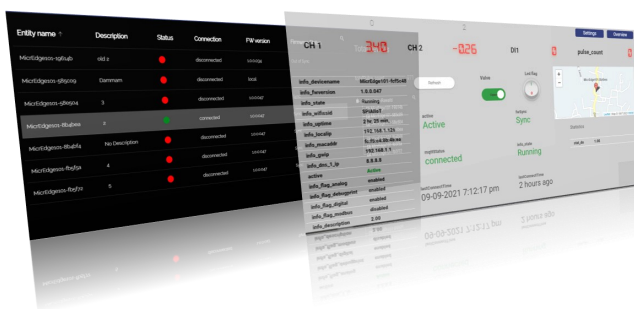
- Low code flow-based visual programming environment for developing your application
- Event driven environment for complex data processing
- Filter, enrich and transform incoming data originated by devices and other data sources
- Trigger notifications or communication with external systems.
- Drag-n-drop nodes to create custom flows

### Integration

- Integrate to external systems like ERP or CMMS using REST APIs
- Provide data to third-party data processing systems like AI/ML Predictive Analytics Platforms
- Provide processed data to external MQTT Brokers
- Extensive RESTful APIs to extend your application

### Cyber Security

- Advanced Role Based Access Control (RBAC)
- Tenant Administrator manages the account and all it's resources
- Tenant administrator can create multiple customer accounts and assign it to a customer administrator
- All customer data and resources are isolated from each other
- Custom roles can be created, and access permissions can be controlled in a granular level
- Encrypted data communication between IloT Gateways and IloTNext platform
- Device tokens for authentication and identification
- Audit Trails to track successful logins, failed logins and other operations and user activities





## Deployment Models

### IIoTNext Cloud (PaaS)

- Highly Scalable
- Fully Managed
- Disaster recovery database
- Hosted on Amazon Web Services
- Simple Pricing Structure
- Pay as you grow
- No contract lock-in
- Free upgrades, bugfixes

### Self Hosted (PaaS)

- Scalability depends on Computing Infrastructure
- Initial Setup Fee Applicable
- Software Managed by IIoTNext team
- Can be hosted on any cloud
- Monthly Fee Model
- Pay as you grow
- No Software Purchase
- Free upgrade, bugfixes

### Perpetual License

- Scalability depends on Computing Infrastructure
- Initial Setup Fee Applicable
- Optional AMC applicable
- No Monthly Fee
- One-time Software License Purchase
- Optional AMC for upgrades and bug fixes

**CONSYST Digital Industries Pvt Ltd.,**

18/317 C, Biznes Avenue, Kochi, Kerala,

683 101, India

IIoTNext@consyst.biz

[iiotnext.com](http://iiotnext.com)

