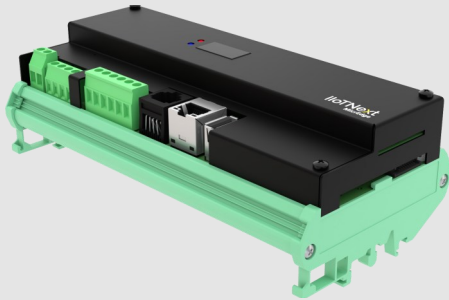


250 Series



Features

- 3 Phase Power Measurement Input
- Zero-Export Control function
- Inbuilt Display
- Data Integration from Meters and Devices via protocols like Modbus RTU/TCP, DLMS, Custom ASCII
- Centralized Device Management & Device Configuration
- OTA Firmware upgrade
- Cloud Communication via Secure MQTT
- Supports IO Expansion Module
- Plug & Play with IloTNext Platform
- Dual SIM Support
- Storage Expansion using MicroSD

IloTNext MicrEdge 250 is a powerful IloT Edge Processor with onboard I/Os for seamless industrial data collection and remote management via IloTNext Platform or third party IloT Platforms

General

Input Power : 230Vac
Mounting : 35mm DIN Rail

Ports

Serial Ports : 1 x RS232/RS485
Ethernet Port : 1 x 10/100 Base Ethernet
USB Port : USB Type A for Console

Protocols

Device Connectivity : Modbus RTU/TCP, DLMS, Custom ASCII

Connectivity

Wireless : 2.4 GHz WiFi IEEE 802.11 b/g/n
: LTE, GSM-850/900/1800/1900MHz, 2 x Nano SIM
Antenna Connector (WiFi & GSM): SMA Female

Configuration

Mobile app : For WiFi configuration

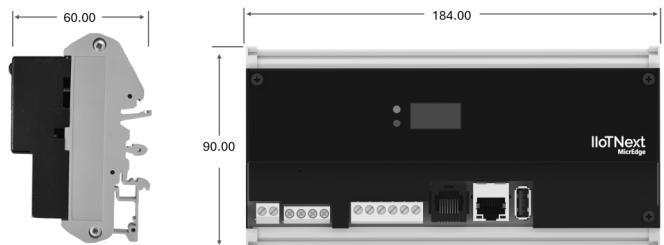
Inputs

Voltage Measurement : 1 x 3 Phase 415Vac Input
Current Measurement : 3 x CT 1/5A Input

Environment

Operating Temperature : -20 to +55 Deg.C
Humidity : 5 - 95% without condensation

Dimensions (in mm)



Ordering Information

(Part #)

Description		Part Number					
		Model	-	01	W	L	X
Version	Ver #	INME250					
Wireless	WiFi Only						
	LTE & WiFi						
Ethernet	Not Available					X	
	Available					E	